



Lindab **Plexus**

Snabbguide installation



Snabbguide installation

Plexus

Symboler



Varmt vatten



Handdragning



Kallt vatten



Tung last – 2 personer krävs – vi rekommenderar att lyftutrustning används vid montering.

Verktyg



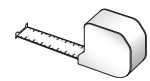
Kniv



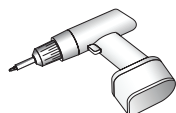
Handskar



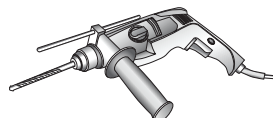
Skor med mjuka sulor



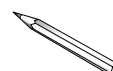
Måttband



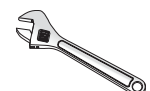
Borrmaskin



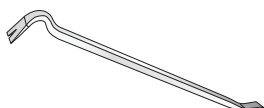
Slagborrmaskin



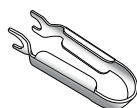
Penna



Skiftnyckel



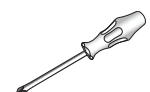
Kofot



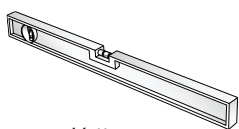
Tectite-verktyg, 12 mm
(Ordernr: 884087)



Tectite-verktyg, liten, 12mm
(Ordernr: 646881)



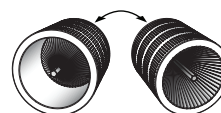
Skruvmejsel



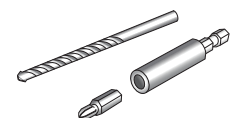
Vattenpass



Lindab PC410
(Ordernr: 103344)



Avgradningsverktyg



Bits och borrar



Dammsugare

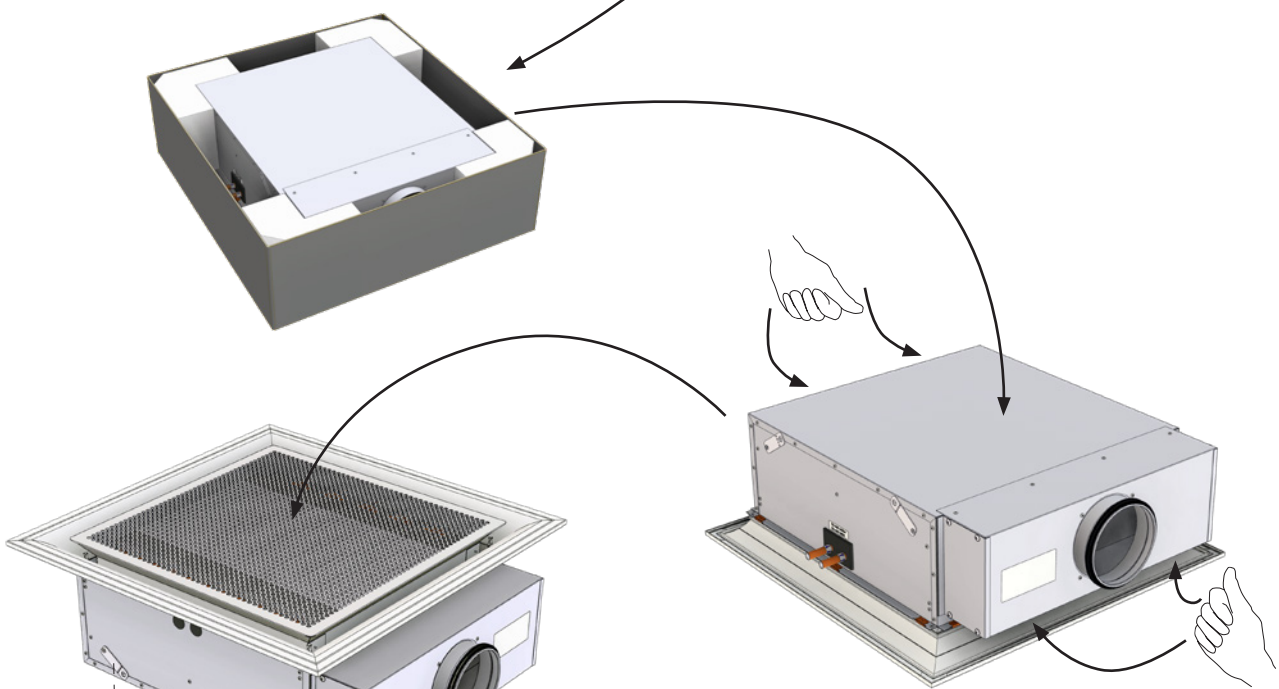
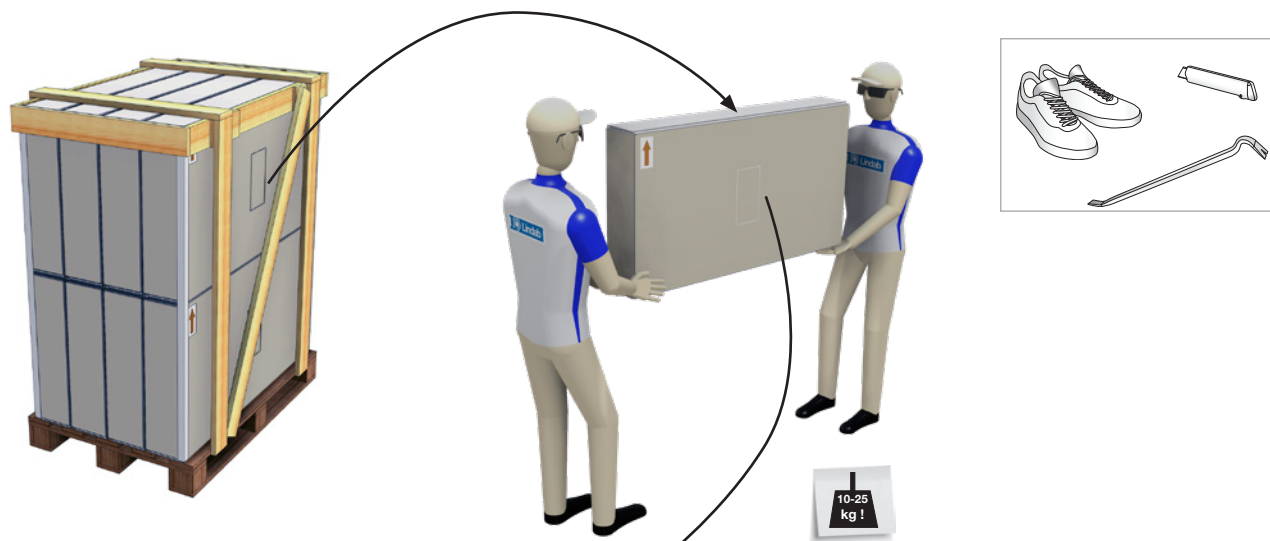


Dammvipa

Snabbguide installation

Plexus

Packning och upppackning



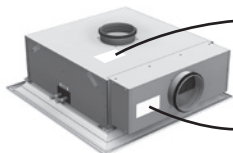
För innehåll, vänligen se [montageinstruktion](#) .

Snabbguide installation

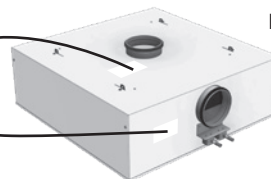
Plexus

Beställningskod etikett

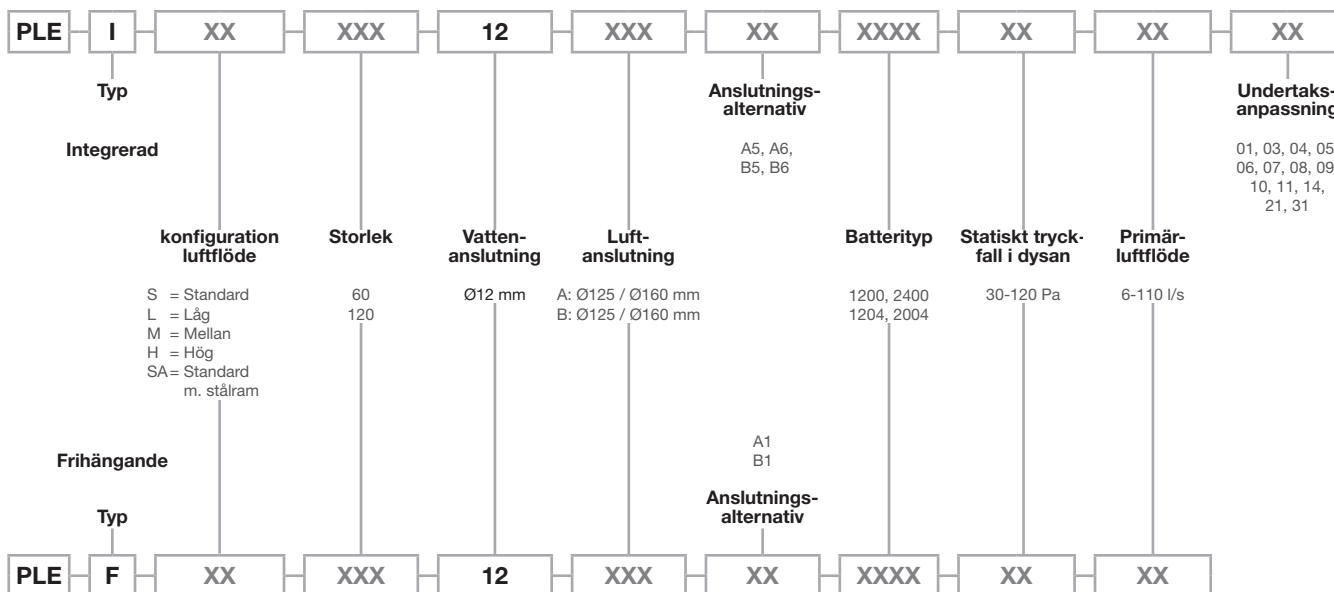
Plexus I
Integrerad



Plexus F
Frihängande



Beställningskod



Produktmärkning

Date	P _{stat} [Pa]	q _v [l/s]	1	2	3	4	Signature

Rev. 04-2012

Position of JetCone adjustment pins

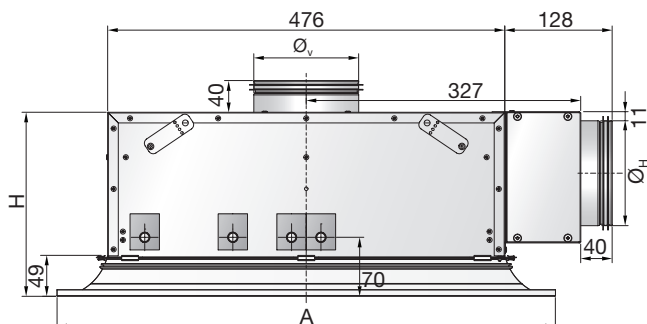
Snabbguide installation

Plexus

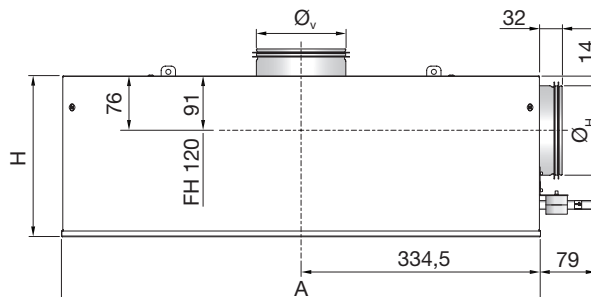
Dimensioner

Alle mått i mm.

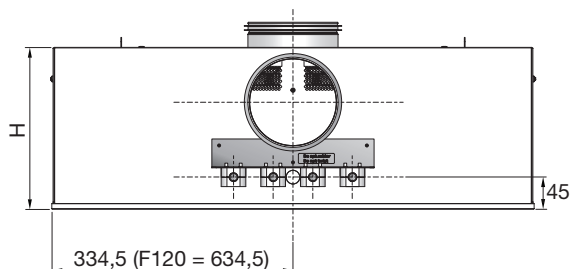
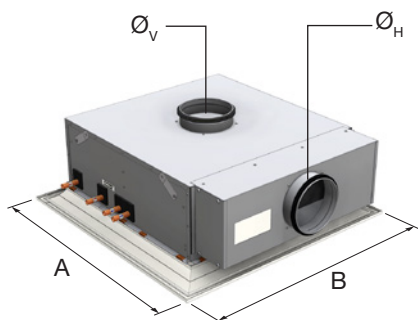
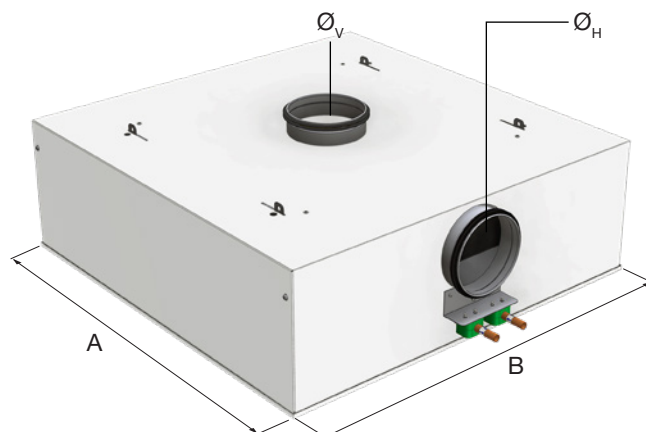
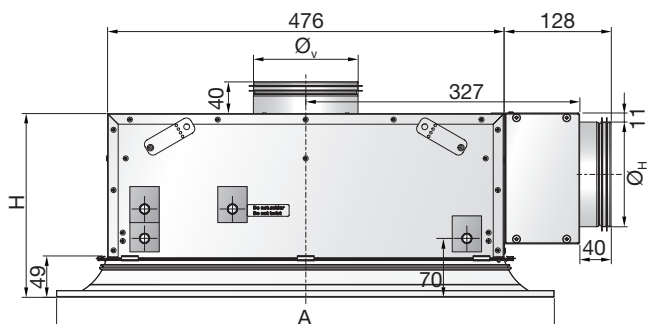
Plexus I 60



Plexus F



Plexus I 120



Typ	Dimensioner [mm]				
	A*	B*	H	Ø _H	Ø _V
I (S/SA) 60	594	594	220	125	125
I (L, M, H) 60	594	594	220	125	160
I (S/SA) 120	594	1194	220	125	160
I (H) 120	594	1194	250	160	N/A

Tabell 1. Plexus I dimensioner.

Typ	Dimensioner [mm]				
	A	B	H	Ø _H	Ø _V
F (S) 60	669	669	225	125	125
F (L, M, H) 60	669	669	225	125	160
F S 120	669	1269	225	125	160
F H 120	669	1269	255	160	N/A

Tabell 2. Plexus F dimensioner.

* Mått A och B beror på taksystem.
Se [monteringsanvisning](#) 5.2.1.

Snabbguide installation

Plexus

Materialdata

Typ	Plexus
kopparrör, kvalitet	EN-12735-2 CU-DHP
Tryckklass	PN10

Tabell 3. Kvalitet och Tryckklass.

Typ	Function	Batterityp CC HH	Vatteninnehåll [l]		
			Kyla	Värme	Total
I-60 / F-60	2-rör	24 00			1,2
I-60 / F-60	4-rör	20 04	1,0	0,2	1,2
I-120 / IH-120 / F-120	2-rör	12 00			1,3
I-120 / IH-120 / F-120	4-rör	12 04	1,3	0,4	1,7

Tabell 4. Vatteninnehåll.

Type	Funktion	Torrsvikt [kg]
		Total
I-60	2-rör	11,6
	4-rör	
F-60	2-rör	17,2
	4-rör	
I-120	2-rör	18,6
	4-rör	20
F-120	2-rör	28,9
	4-rör	30,3
IH-120	2-rör	19,6
	4-rör	21
FH-120	2-rör	29,9
	4-rör	31,3

Tabell 5. Vikt.

Miljövarudeklaration

Följ länkarna nedan:

- [Byggvarudeklaration](#)
- [Försäkran om överensstämmelse.](#)
- [Eurovent certifikat](#)

3.6 Tryckklass

Samtliga produkter i Lindabs sortiment för vattenburen värme/kyla, produceras enligt tryckklass PN10 enligt EN 1333: 2006.

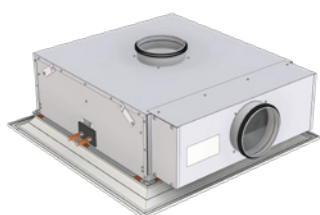
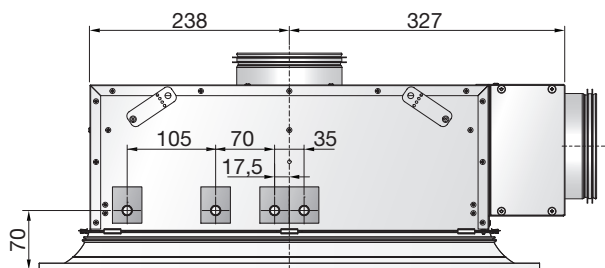
Detta betyder att arbetstrycket för produkterna vid en vattentemperatur på 20°C inte får överstiga 10 bar.

Snabbguide installation

Plexus

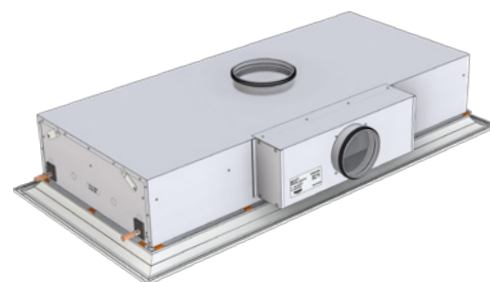
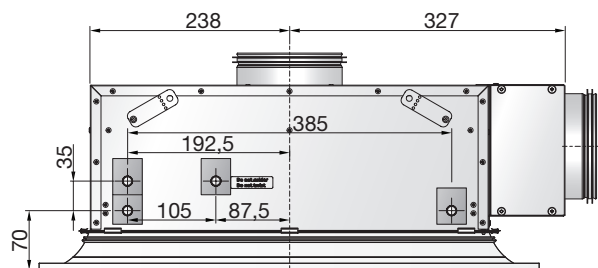
Vattenanslutningar

Plexus I 60

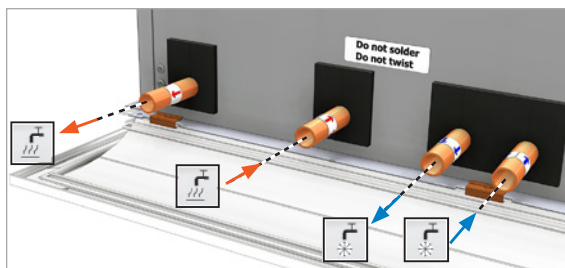
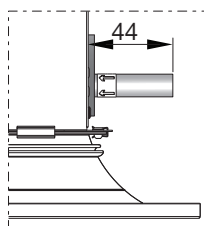


I-60: 2-rörs batteri, kyla eller värme (standard).

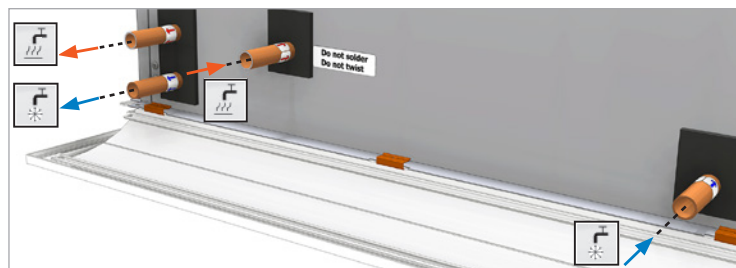
Plexus I 120



I-120: 2-rörs batteri, kyla eller värme (standard).

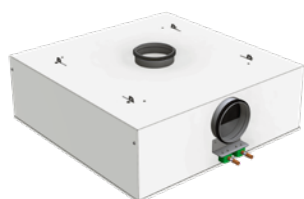


I-60: 4-rörs batteri, kyla och värme (plusfunktion).

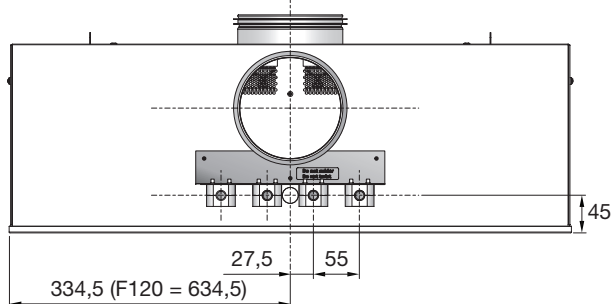


I-120: 4-rörs batteri, kyla och värme (plusfunktion).

Plexus F 60



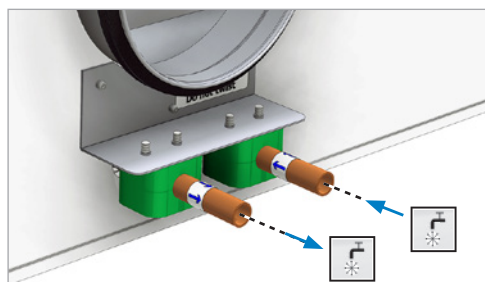
F-60: 2-rörs batteri, kyla eller värme (standard).



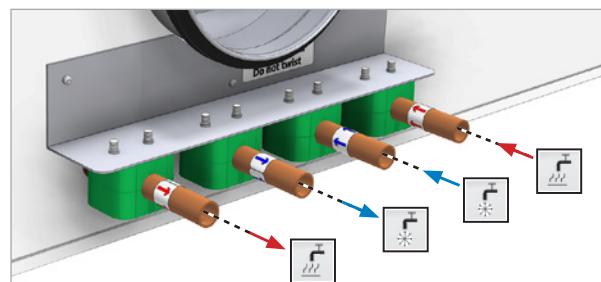
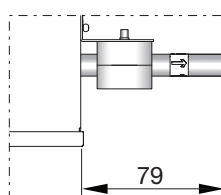
Plexus F 120



F-120: 2-rörs batteri, kyla eller värme (standard).



F modell: 2-rörs batteri (standard).



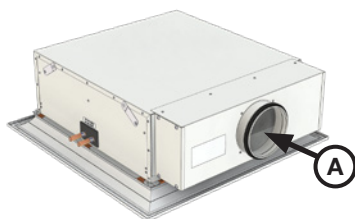
F modell: 4-rörs batteri (plusfunktion).

Snabbguide installation

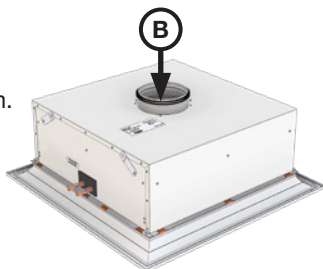
Plexus

Möjliga anslutningar för tilluft

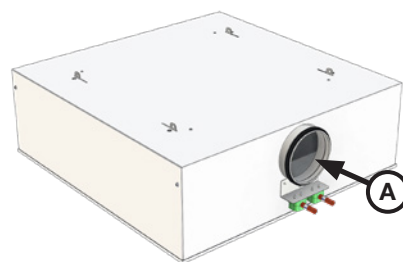
Plexus I-60
A: Ø125 mm.



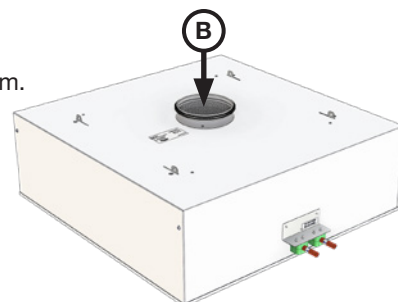
Plexus I-60
B: S Ø125 mm,
B: L/M/H Ø160 mm.



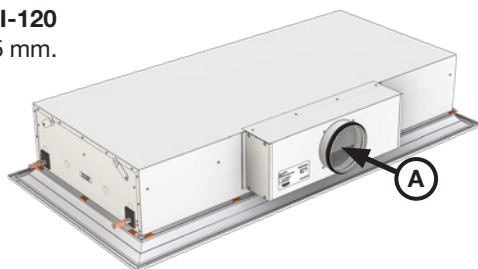
Plexus F-60
A: Ø125 mm.



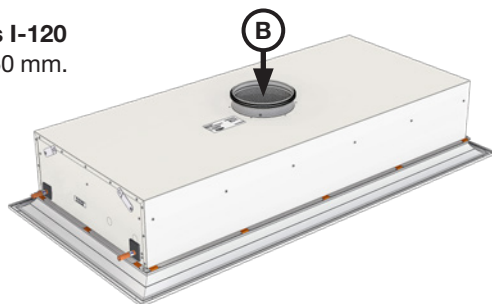
Plexus F-60
B: S Ø125 mm,
B: L/M/H Ø160 mm.



Plexus I-120
A: Ø125 mm.



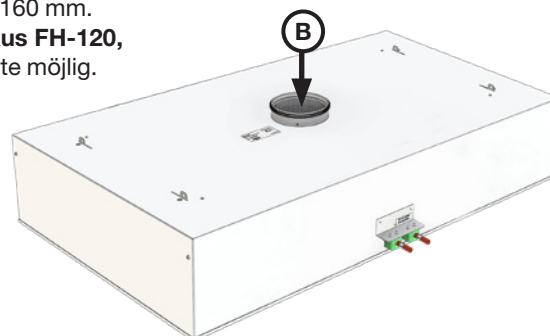
Plexus I-120
B: Ø160 mm.



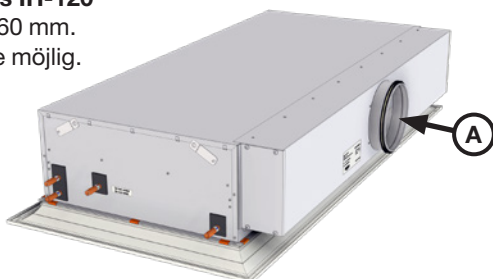
Plexus F-120
A: Ø125 mm,
Plexus FH-120
A: Ø160 mm.



Plexus F-120
B: Ø160 mm.
Plexus FH-120,
B: Inte möjlig.



Plexus IH-120
A: Ø160 mm.
B: Inte möjlig.



Snabbguide installation

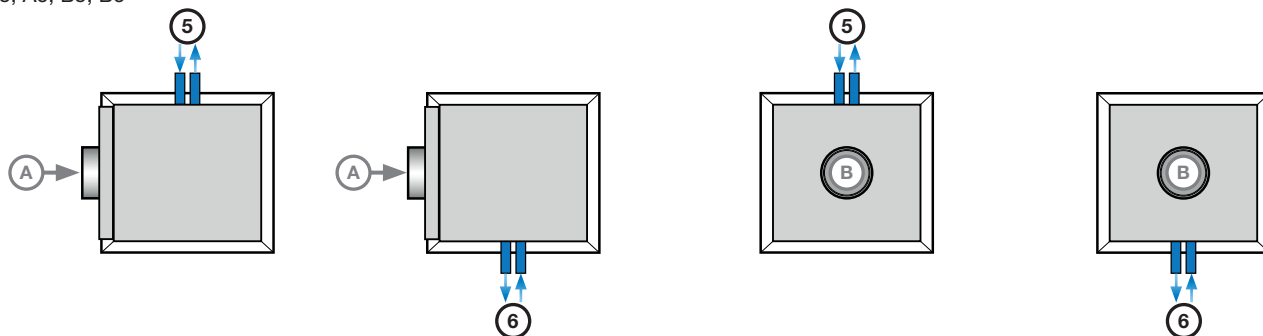
Plexus

Vatten in- och utloppsanslutningar

Möjliga anslutningar för vattenburen kyla eller värme (två anslutningsrör, standard)

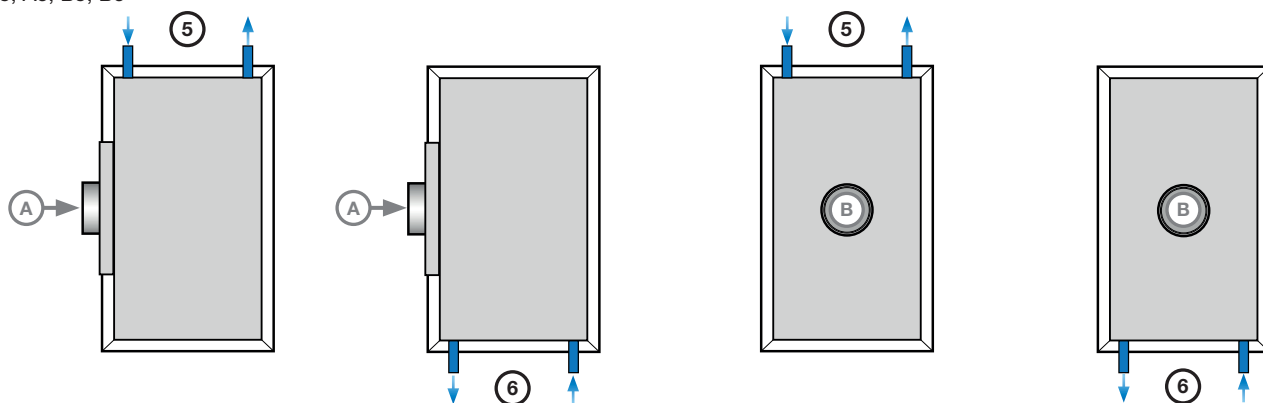
Plexus I-60

A5, A6, B5, B6



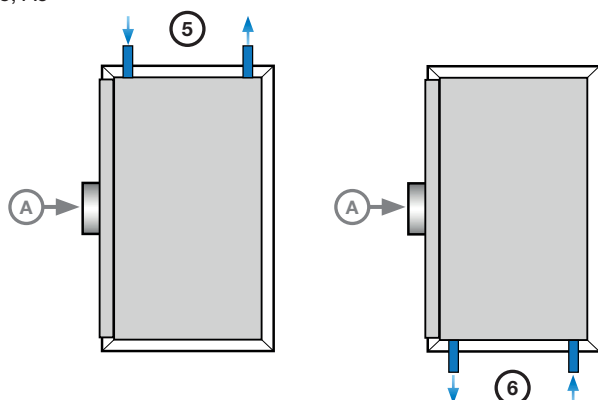
Plexus I-120

A5, A6, B5, B6



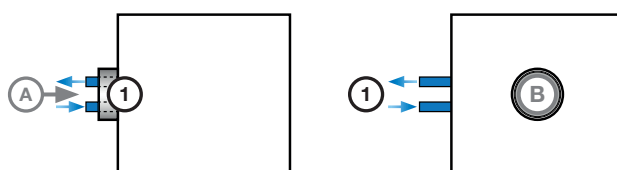
Plexus IH-120

A5, A6



Plexus F-60

A1, B1

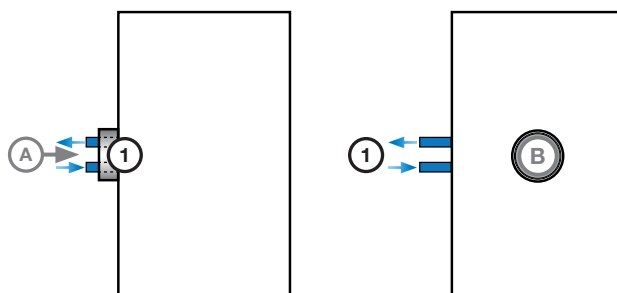


Plexus F-120 / FH-120

A1

Plexus F-120

B1



Snabbguide installation

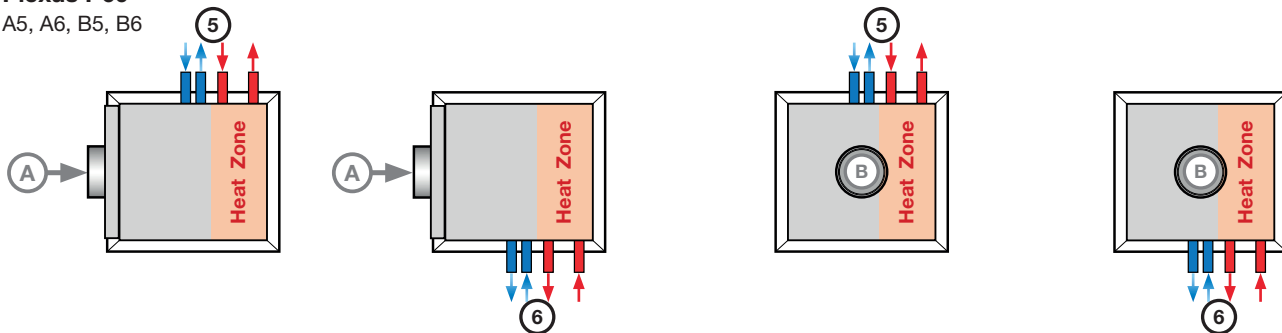
Plexus

Vatten in- och utloppsanslutningar

Möjliga anslutningar, vattenburen kyla och värme (fyra anslutningsrör, Plusfunktion)

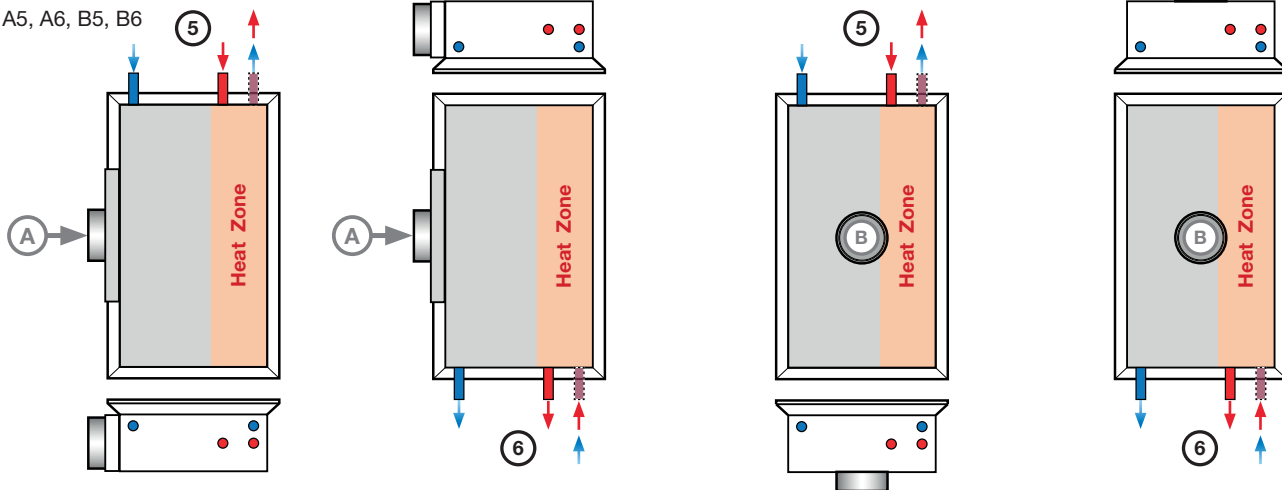
Plexus I-60

A5, A6, B5, B6



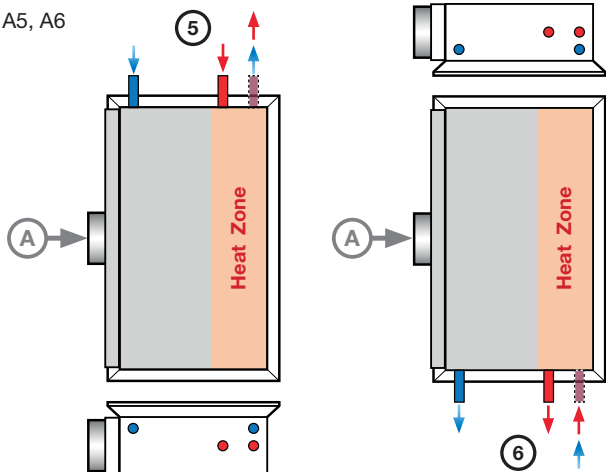
Plexus I-120

A5, A6, B5, B6



Plexus IH-120

A5, A6



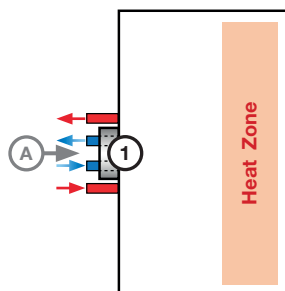
Plexus F-60

A1, B1



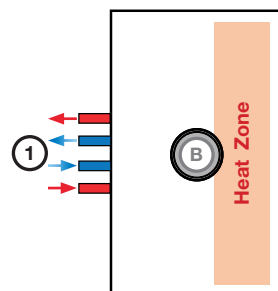
Plexus F-120 / FH-120

A1



Plexus F-120

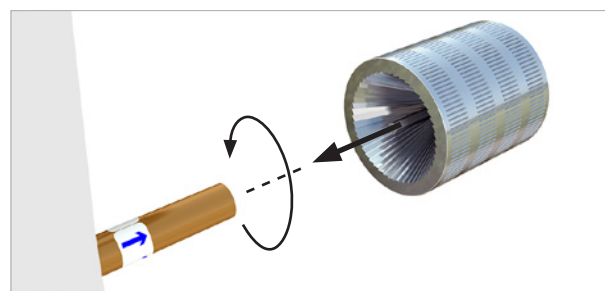
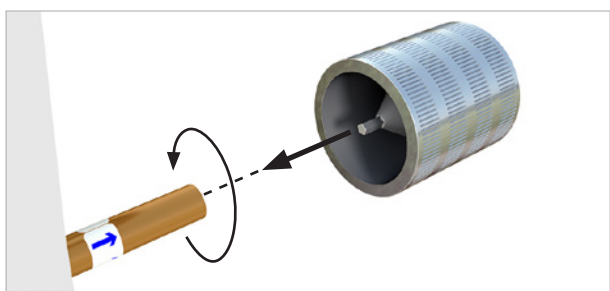
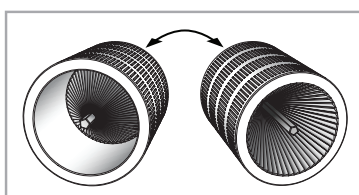
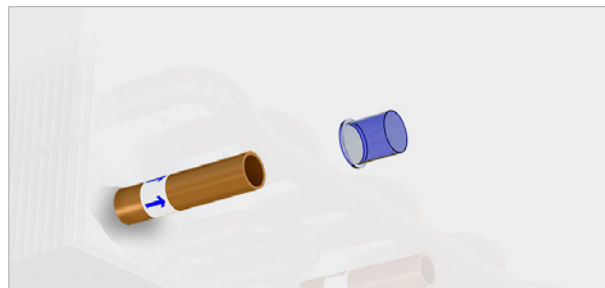
B1



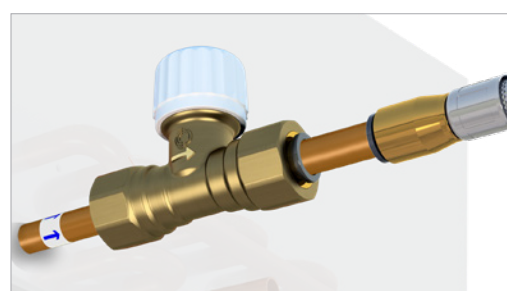
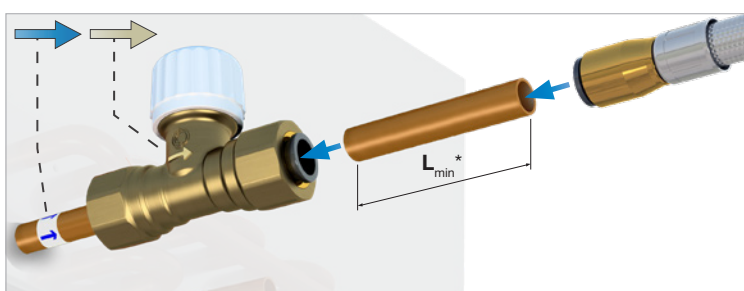
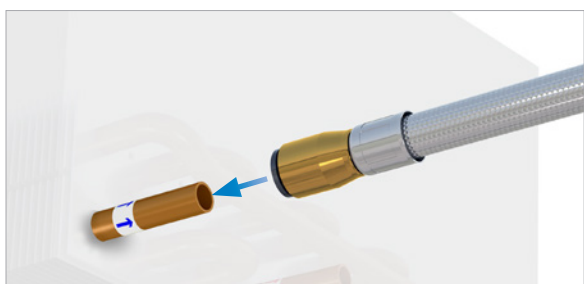
Snabbguide installation

Plexus

Före montering



Flexibla slangar och push-on ventiler

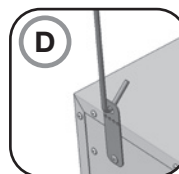
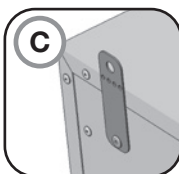
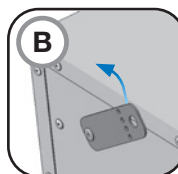
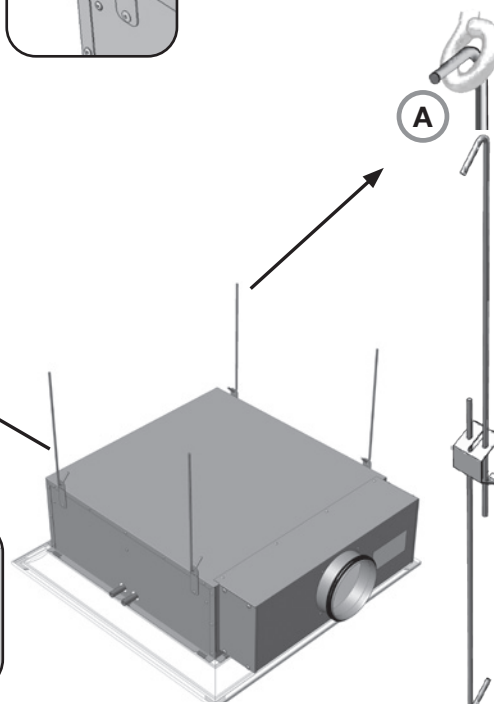
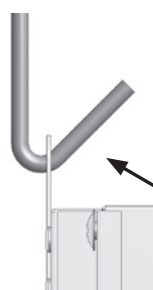
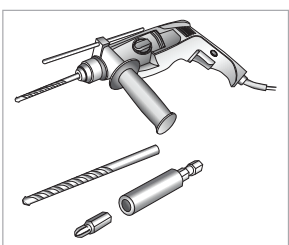
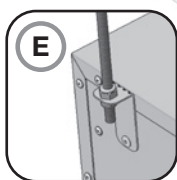
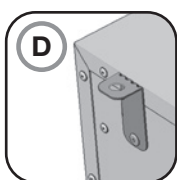
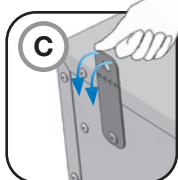
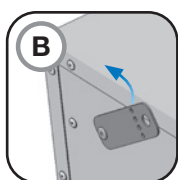
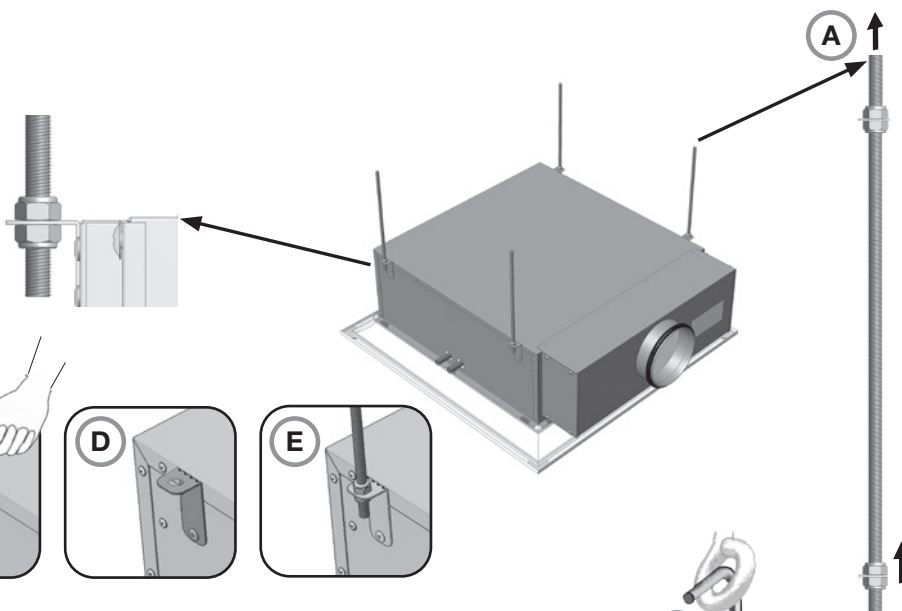
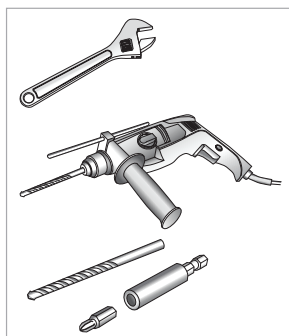
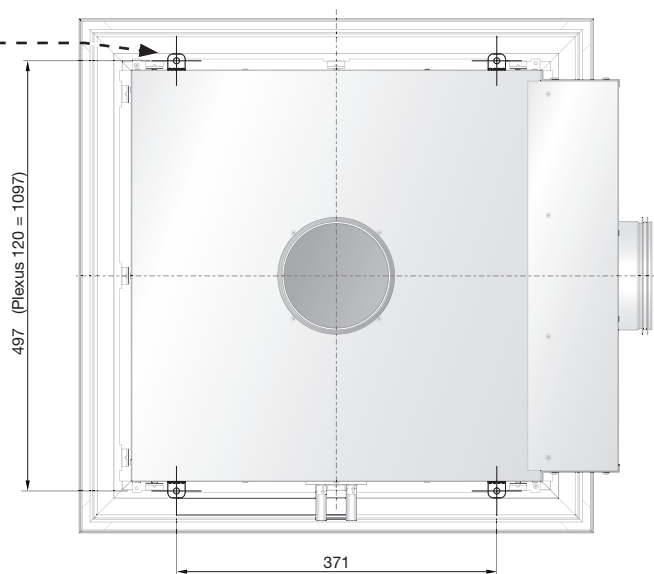
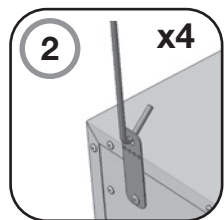
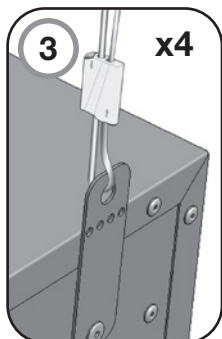
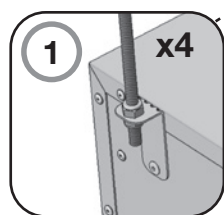


* $L_{min} = 70 \text{ mm}$ (Säkerställer korrekt insättningsdjup samt möjlighet att demontera anslutning vid behov).
 Lindab flexibla slangar fins även med slät, rak ände för att ansluta direkt till Push-fit anslutning.

Snabbguide installation

Plexus

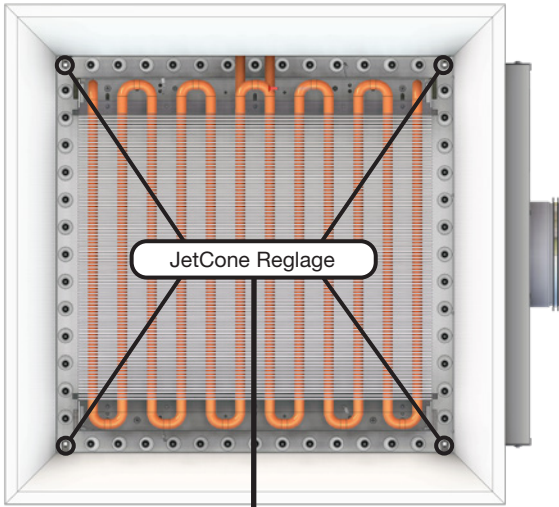
Montering av produkt



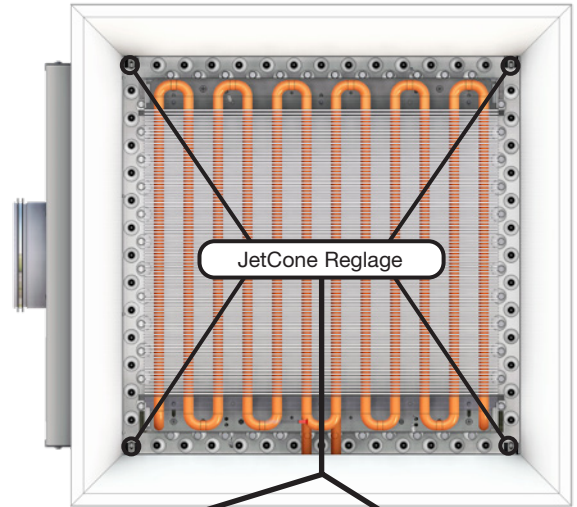
Snabbguide installation

Plexus

Reglage för JetCones



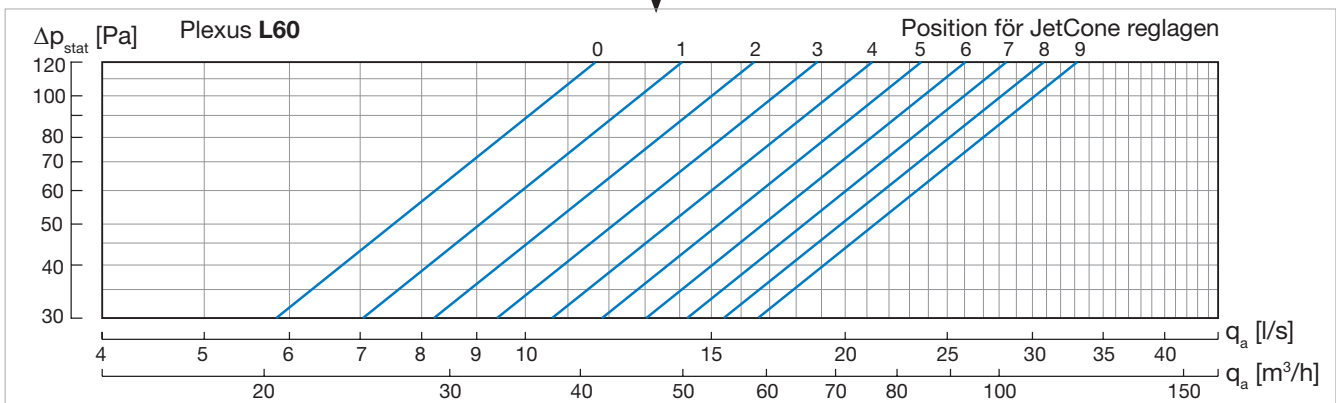
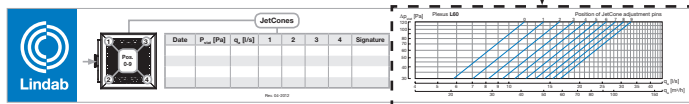
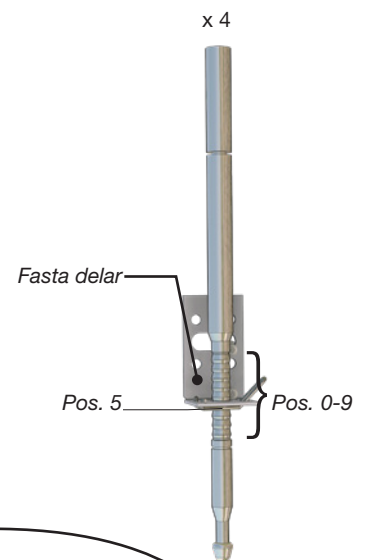
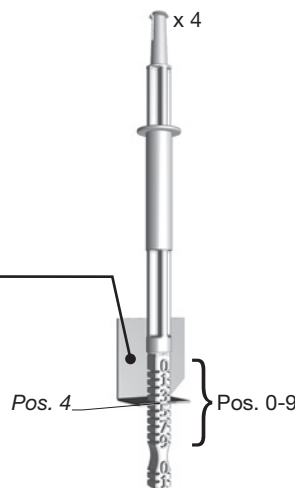
JetCone-reglage 1 i plast



JetCone-reglage 2 i plast

JetCone-reglage i aluminium

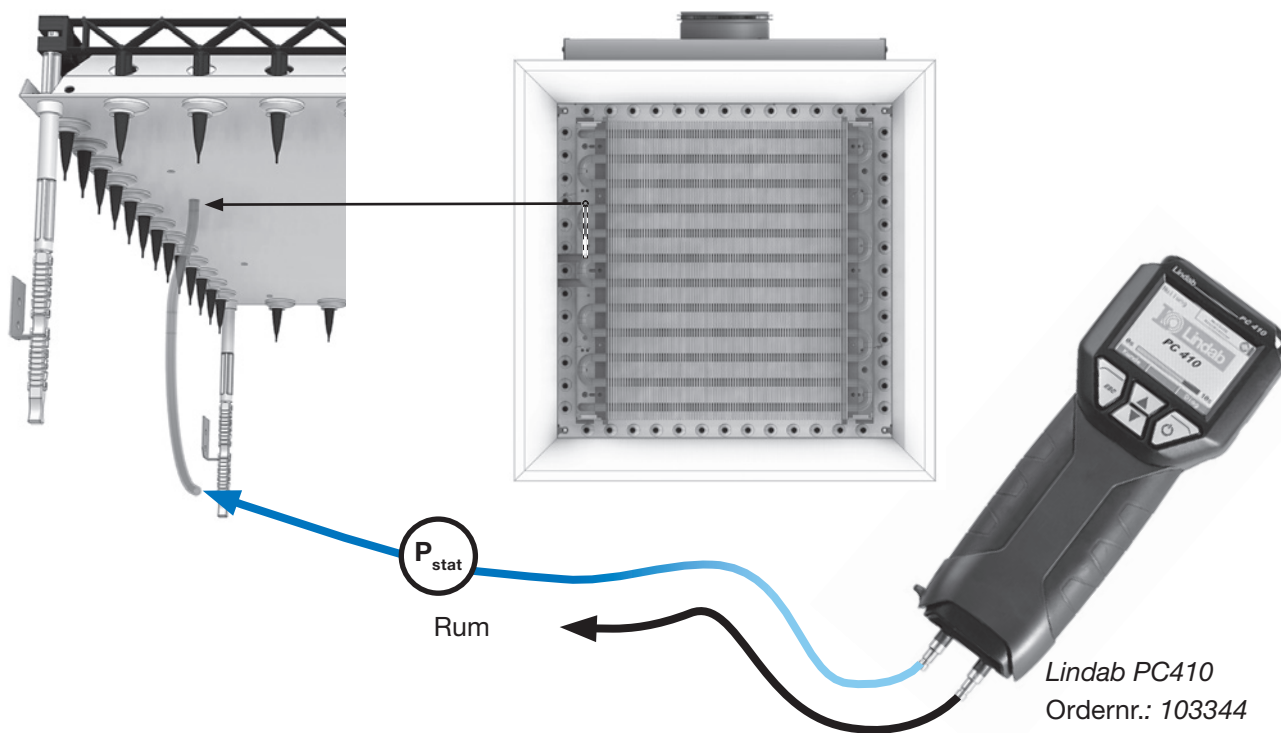
- Pos. 0**
Minsta position
JetCone
20% luftflöde.
- Pos. 5**
Standard
inställning
50% öppen
70% luftflöde.
- Pos. 9**
Max. öppen
JetCone
100% luftflöde.



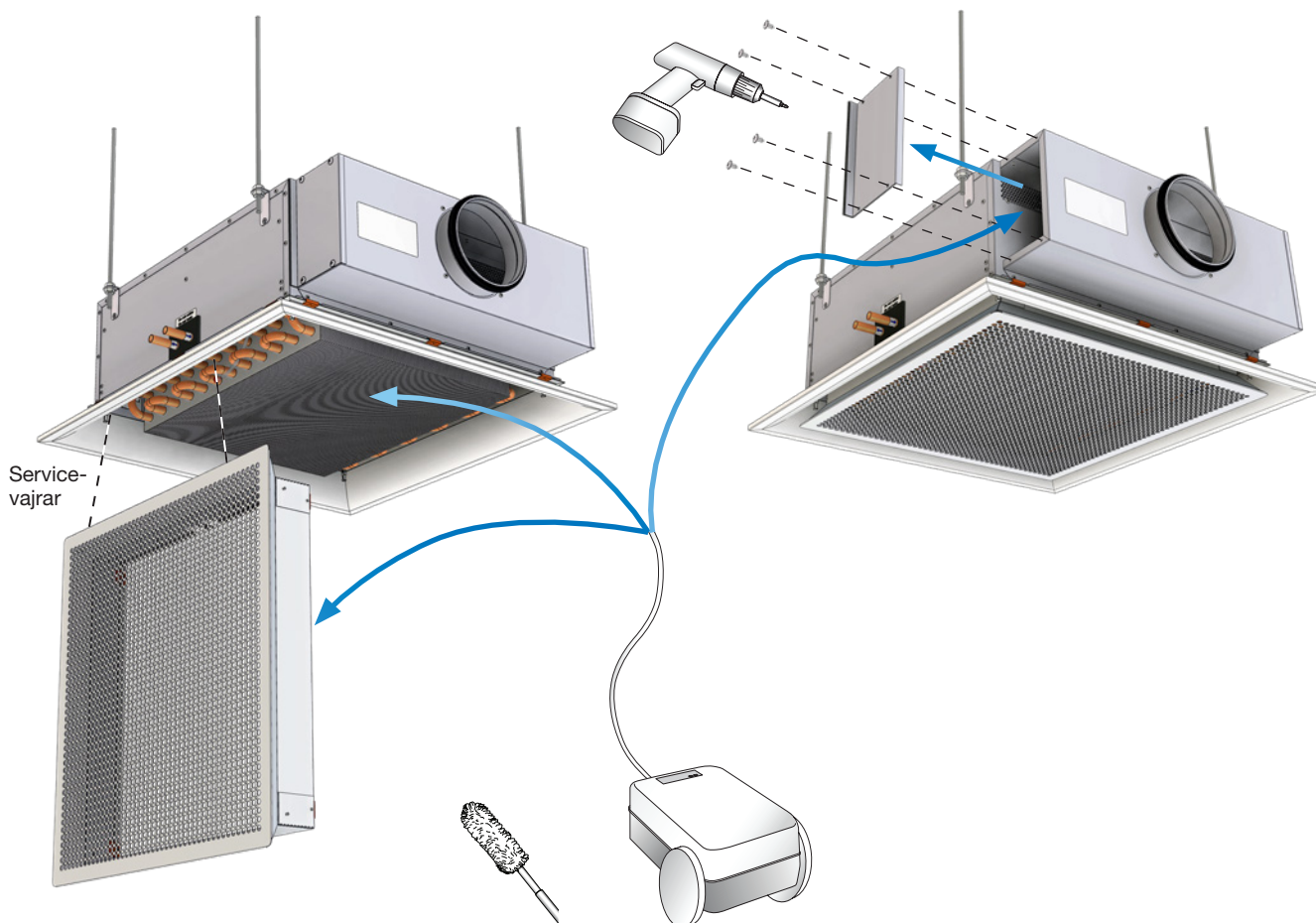
Snabbguide installation

Plexus

Mäta dysans statiske tryck och luftrycket



Underhåll





De flesta av oss tillbringar större delen av tiden inomhus. Inomhusklimatet är avgörande för hur vi mår, hur mycket vi orkar och om vi håller oss friska.

Vi på Lindab har därför gjort till vår viktigaste uppgift att bidra till ett inomhusklimat som förbättrar människors liv. Det gör vi genom att utveckla energieffektiva ventilationslösningar och hållbara byggprodukter. Vi vill också bidra till ett bättre klimat för vår planet genom att arbeta på ett sätt som är hållbart för både människor och miljön.

Lindab | För ett bättre klimat